



Schweizerische Eidgenossenschaft
Confédération suisse
Confederazione Svizzera
Confederaziun svizra

Mission of Switzerland to the European Union



57 km to cross the Alps

Enhancing Sustainable Connectivity across Europe

In June 2016, the new **Gotthard Base Tunnel** will be officially opened. This important milestone in rail history will bring people and markets along the **TEN-T Rhine-Alpine Corridor** closer together.

In particular, it will foster **more efficient and competitive transportation of goods** and help promoting a **more environmentally friendly and sustainable transport policy** on the busy freight route from Rotterdam and Antwerp to Genoa.

This is perfectly in line with a **major goal of the Swiss transport policy**: to facilitate the **modal shift**. It can only be achieved by **increasing capacity**, providing **higher reliability** as well as **simpler production workflows** for rail freight.

The **Swiss people strongly supported the construction of the Gotthard Base Tunnel**, as the *New Railway Link through the Alps* (NLRA, including the Gotthard, Lötschberg and Ceneri Base Tunnels) was adopted through a national referendum in 1992.

By providing a key segment of the Rhine-Alpine Corridor, **Switzerland significantly contributes to the European transport policy and the Single Market**.



TEN-T Rhine-Alps and the Gotthard Base Tunnel efficient – competitive – sustainable



A flat route length of 57 km - **a gain in efficiency**



260 trains per day, 49 million tons of goods annually (20% more than today) - **a gain in volume**



65 passenger trains per day - **an increased freedom of movement**



Only one locomotive necessary - **a reduction of cost**



from 2016, the journey time between Milan and Zurich takes ca. 30 minutes less, from 2020 ca. 60 minutes less - **a reduction of time**



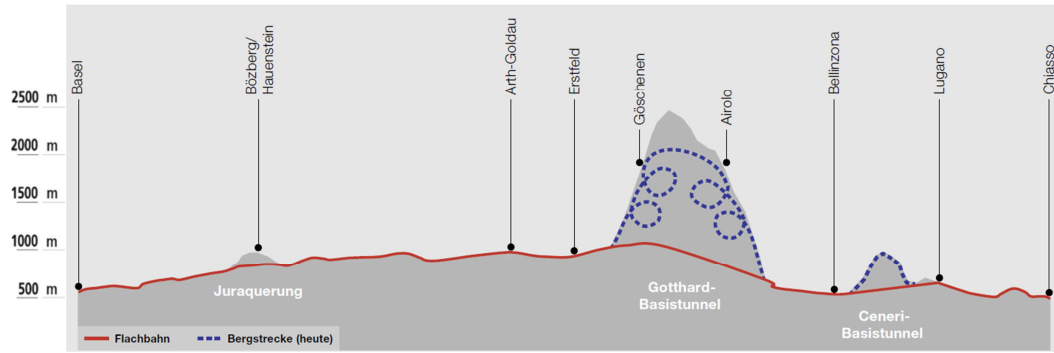
EUR 8.7 billion (total of EUR 16.3 billion for the NLRA) - **a substantial contribution to intra-european connectivity**

© Corridor-rhine-alpine.eu

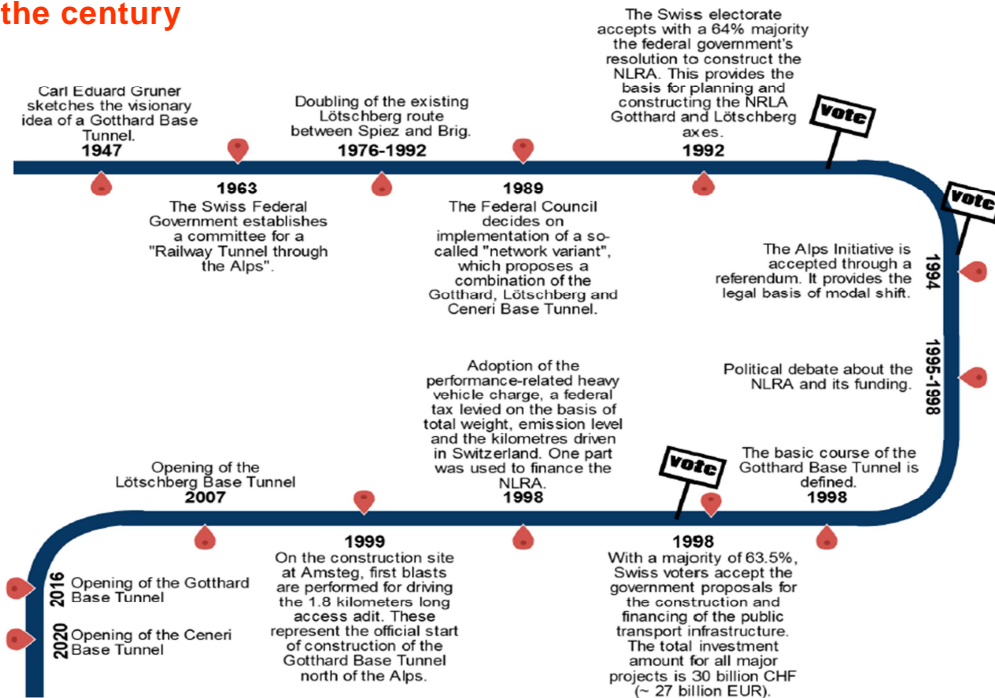
Switzerland connects people and markets

The Alps are no longer an obstacle

At its deepest point, the Gotthard Base Tunnel runs more than 2 kilometers below the mountains

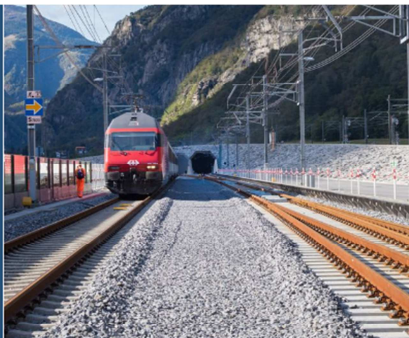


A project of the century



"Switzerland can be proud of this project of the century. The Gotthard Base Tunnel represents the Swiss innovation, precision and reliability."

Doris Leuthard, Federal Councillor, Federal Department of the Environment, Transport, Energy and Communications



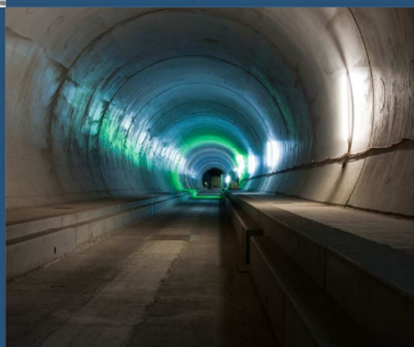
"The Gotthard Base Tunnel is a great contribution to a sustainable traffic along the corridor and represents an encouragement for EU member states to develop further infrastructures (bottlenecks, capacity upgrades, multimodal connections in the ports)."

Pawel Wojciechowski, European Coordinator of the Rhine-Alpine Corridor, European Commission



"Our hinterland is the whole of Europe. The new Gotthard tunnel is of crucial importance to us in strengthening our Europe-wide connections."

Luc Arnouts, Chief Commercial Officer, Member of the management board of Antwerp Port Authority



For further informations

Official website Alptransit, Gotthard

Federal office of transport

Ceremony for the opening of the Gotthard Base Tunnel

European Commission, Mobility and transport, Rhine-Alpine Core Network Corridor

